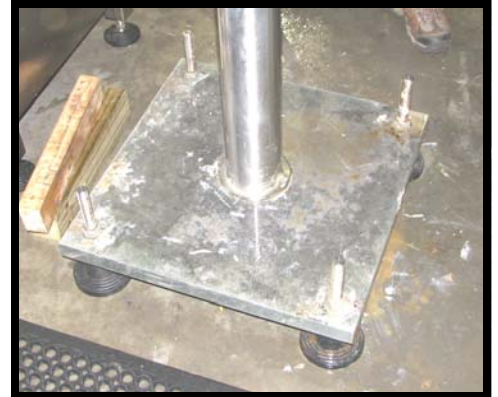


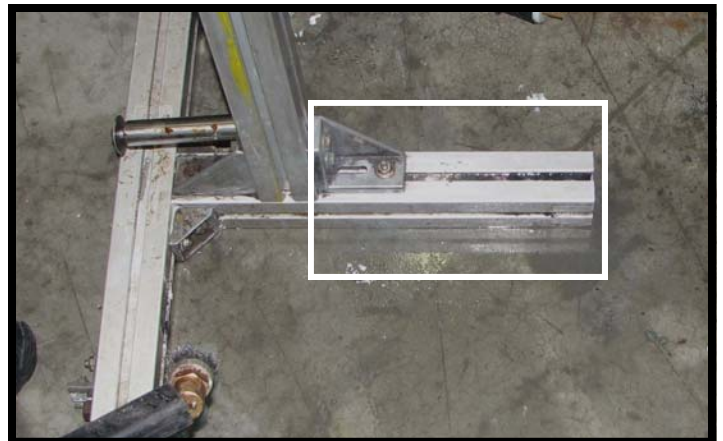
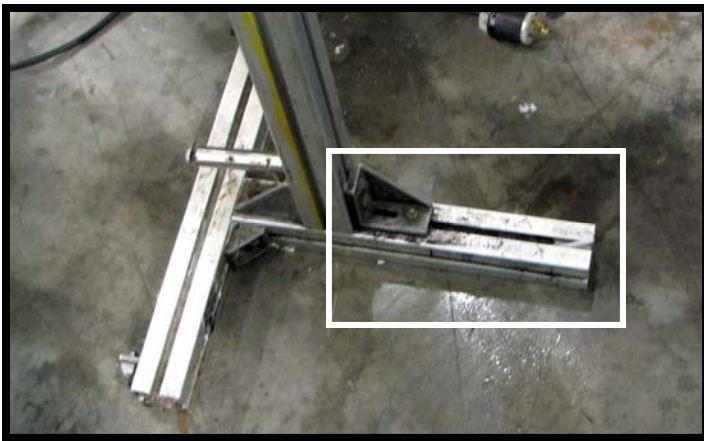
SOAP AND SHAMPOO PACKAGING ULTRAVAPOR DEMONSTRATION RESULTS

November 2007

Equipment demonstrated: Junior 6 KW (220 V 3 phase) UltraVapor unit with vacuum, 7 cm suction tool, long lance, short lance, short brush tool and squeegee tool.



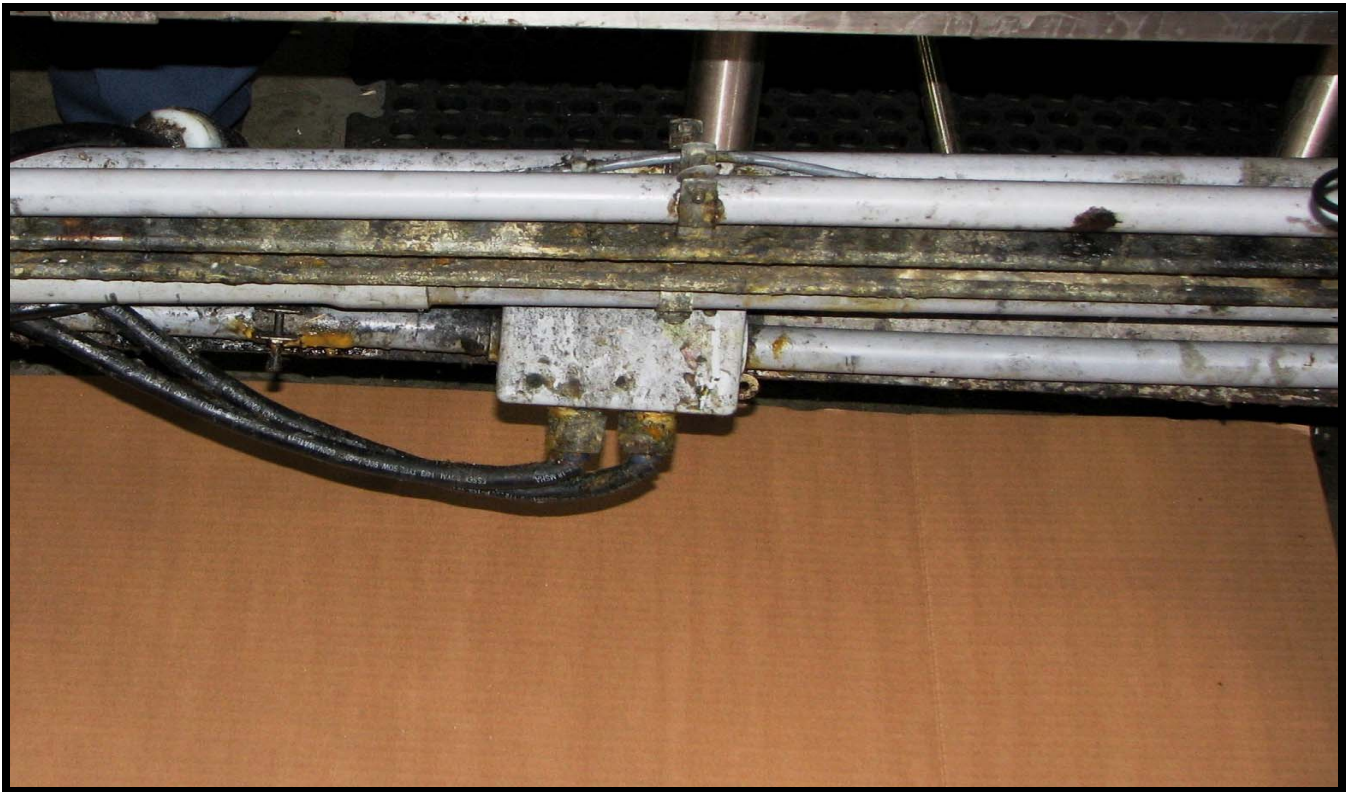
Cleaning dried product from metal base—initially used brush tool with stainless steel brush and then finished up using 7 CM suction tool to remove moisture and soil.



Aluminum frame cleaned of soil using brush tool—note absence of any significant water after cleaning.



Using small lance to clean conduit, wiring and framework of conveyor while production was running.



Cleaned section of conduit, wiring and framework with long lance—note the limited moisture/dirt captured on the cardboard.