

AUTOMOTIVE SUBASSEMBLY (Welding) DEMONSTRATION RESULTS

July 28, 2006

Equipment demonstrated:

18 KW Special 2 UltraVapor tool, long and short lances, short brush holder with steel brushes and floor scraper tool



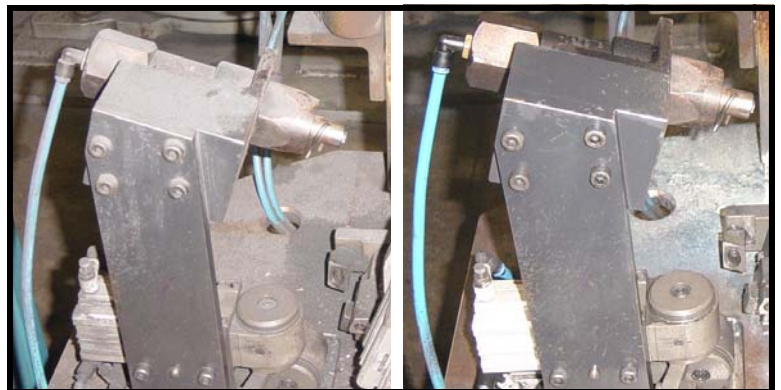
Clean robotic cells in 15 to 25% of the time taken using compressed air, scrapers and wipe down and without any fear of damaging sensors, motors, wiring etc.



UltraVapor is safe and easy to use and can be used during production and during production breaks increasing labor productivity.

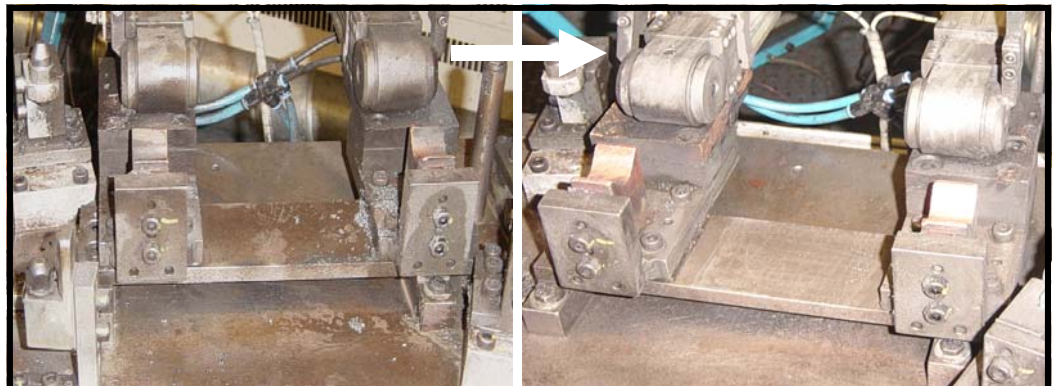
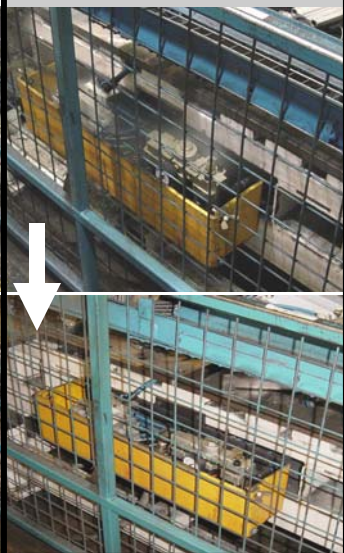


With the floor tools easily clean away dirt, oils and ground in rubber. Optional vacuum system leaves the floor clean and dry.



Short and long lances easily move grease and oils. Brush attachments remove more stubborn soils including weld splatter.

Clean hard to reach areas without having to disassemble equipment or barriers.



For heavy soiled areas, particularly areas of heavy weld splatter multiple sessions may be required to fully clean the equipment however once clean it is easy to keep clean with scheduled cleaning sessions.

